

Home

About Us

Contact Us

Service List

Recycling

Reduce Reuse Recycle



Clean Communities volunteers preparing to clean Bike Path

The purpose of this web page is to provide information concerning all of the services provided by the Department of Public Works.

The benefits of recycling should be seriously considered. By removing recyclables from the regular trash flow, we help save our environment. Each ton of trash that is recycled helps to save tax dollars that would otherwise be spent on rising trash disposal fees.

3994.56 tons of waste was recycled in 2010

Great Job Residents!

Important Phone Numbers:

Camden County Environmental Affairs
(oil based paint, hazardous household goods
etc.)

856 858 5241

Best Buy Stores: 888 237 8289
Electronic Waste

Runnemede Public Works: 856 931 0646

Home

About Us

Contact Us

Service List

Page Title

Electronic Waste

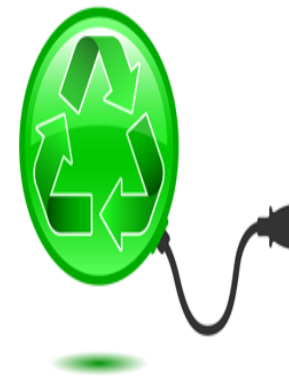
Effective January 1, 2011 per the “State of New Jersey Electronics Waste Management Act” residents are no longer permitted to place electronic waste at the curb. If you have electronic (E -Waste) you have several options.

Local Best Buy Stores –accept computers and TV’s 32” and under for free. It is recommended residents call for hours of acceptance and further details at 1 (888) 237-8289

OR

You can call the Public Works Garage @ (856) 931 - 0646 to schedule pick up of your electronic waste.

It is important that the E Waste is not damaged.
The recycling facilities now charge if the E Waste is damaged



Important Phone Numbers:

Best Buy Stores: (888) 237- 8289

Runnemede Public Works:(856) 931- 0646

Borough of Runnemede Department of Public Works

[Home](#)

[About Us](#)

[Contact Us](#)

[Service List](#)

[Page Title](#)

Single Stream “Recycling Made Simple”

IT ALL GOES IN TOGETHER:

Newspaper, Magazines, catalogs, telephone/soft cover books, junk mail/envelopes (all Types)

Paper (all Colors, staples, paperclips are okay)

Paperboard (cereal/shoe boxes)

Cardboard/brown paper bags

Plastic narrow neck bottles numbered 1, 2, 4, 5, 7

Soda/Juice/Water Bottles (glass or plastic)

Milk Jugs, Bleach/Detergent, Shampoo Bottles

Glass Bottles/Jars (any color)

Metal Cans (tin/steel/aluminum)

WHAT NOT TO INCLUDE

No Plastic Bags

No Unmarked plastics

(laundry baskets, chairs, toys)

No Windows/No light bulbs

No Dishes, Pyrex or Ceramics

No Foam Packaging, No Styrofoam

No Recyclables Containing Food Waste

Recycling is the law

Important Phone Numbers:

**Runnemede Department of Public Works
856 931 0646**

**Camden County Environmental Affairs
(oil based paint, hazardous household goods etc.)**

856 858 5241

Service List

Recycling is done Biweekly
West of Black Horse Pike on Tuesday
East of Black Horse Pike on Thursday

Yard waste

Yard waste removal begins first Monday in April

Ends last Monday in October.

Yard waste & grass clippings will be picked up on Mondays. (season starts first Monday in April and ends last Monday in October). All yard waste or grass clippings should be placed in containers and should not exceed 50lbs. **If trash is mixed with grass clippings or yard waste they will not be removed.** Branches and brush must be tied in bundles weighing no more than 50lbs. If the quantity of yard waste is more than can be removed on Monday the process will resume the next day or on Wednesday on a bi-weekly recycling week. **Plastic Bags for grass clippings are not acceptable**

Leaf Collection Dates

- **WEST OF BLACK HORSE PIKE**
WEEK OF:

10/29/12
11/12/12

11/26/12
12/10/12

- **EAST OF BLACK HORSE PIKE**
WEEK OF:

10/22/12
11/05/12
11/19/12

12/03/12
12/17/12

**Leaf Collection Begins Oct-29,
Ends Dec-17 2012**

For more information about this service:

(856) 931- 0646

For more information about this service:

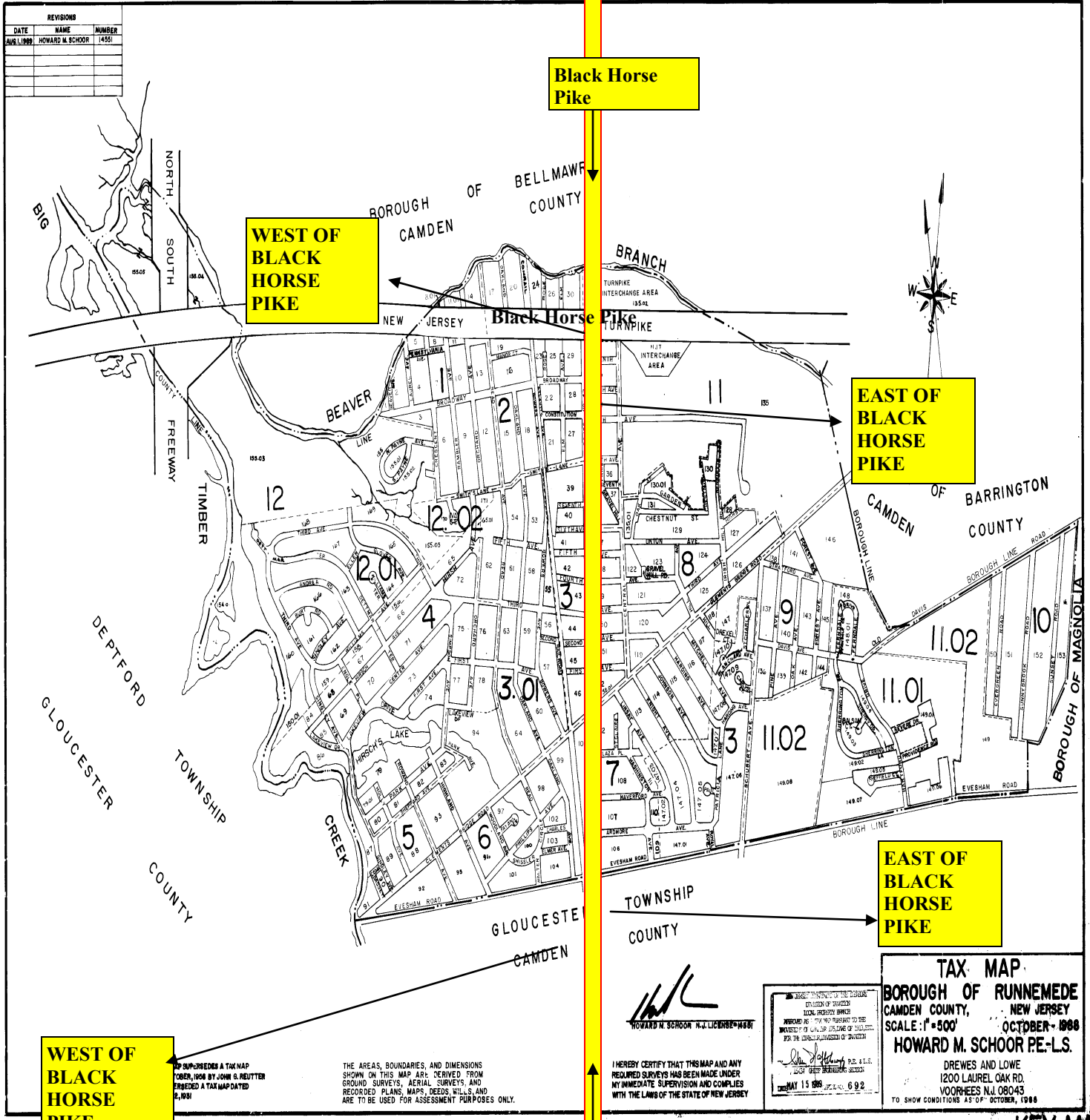
(856) 931- 0646

Recycling is done Biweekly

Recycling is done Biweekly

West of Black Horse Pike on Tuesday

East of Black Horse Pike on Thursday



Leaf Collection Dates

WEST OF BLACK HORSE PIKE WEEK OF:

- 10/29/12
- 11/12/12
- 11/26/12
- 12/10/12

Black Horse Pike

Leaf Collection Dates

EAST OF BLACK HORSE PIKE WEEK OF:

- 10/22/12
- 11/5/12
- 11/19/12
- 12/03/12
- 12/17/11